



S. S Jain Subodh P.G. (Autonomous) College

SUBJECT - .NET Technology

TITLE - ASP.NET

Introduction to ASP.NET



Introduction to ASP.NET

- ASP.NET is part of the Microsoft .NET framework
- ASP.NET is an effective and flexible technology for creating **interactive and dynamic web pages**.
- It is a convergence of two major Microsoft technologies:
 - **Active Server Pages (ASP)**
 - Active Server Pages is Microsoft's server side scripting technology for building dynamic web pages.
 - **.NET Framework**
 - The .NET Framework is a suite of technologies designed by Microsoft where program development takes place.



Introduction to ASP.NET

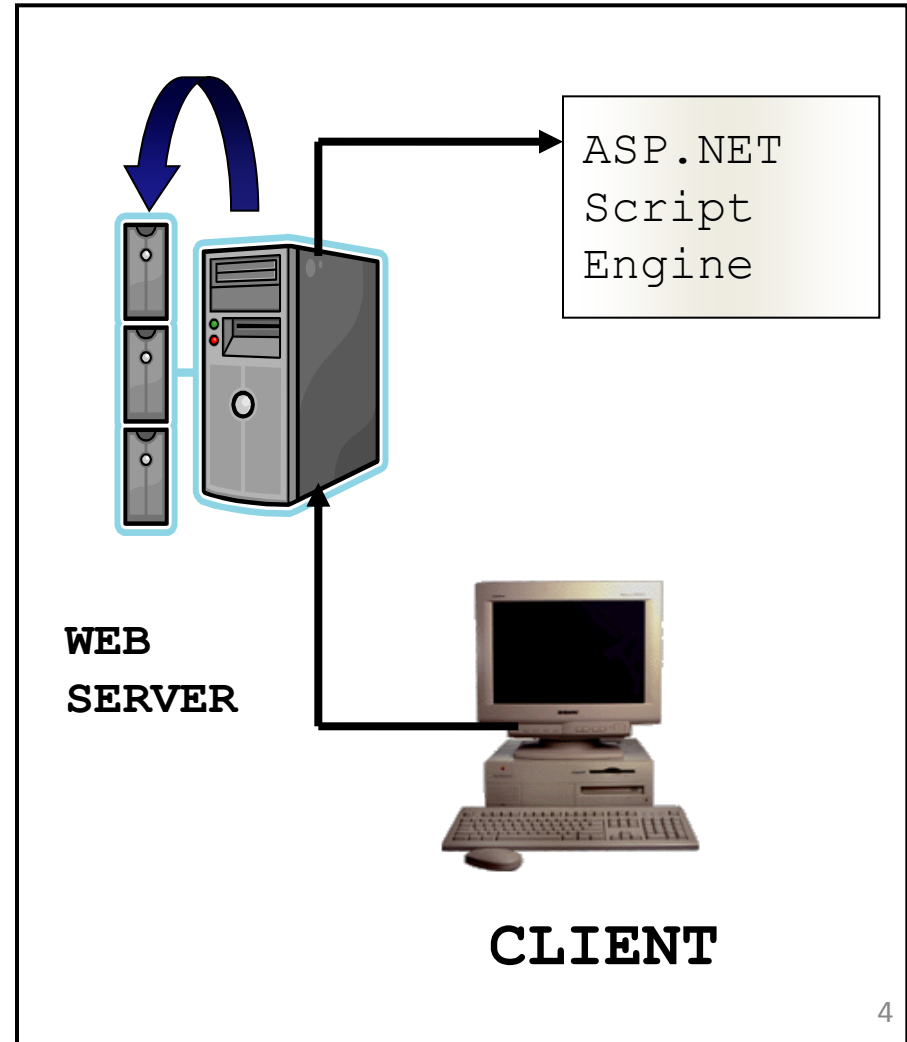
- It is built on .NET Common Language Runtime
- ASP.NET :
 - Provides better user authentication
 - Has better language support.
 - Has a large set of new controls (web controls)
 - Uses compiled code, which increases the performance of the applications
- It is programmable using any of the .NET languages (VB.NET, C#, VJ# etc).
- The ASP.NET pages are saved with the **.aspx** extension.



Working of an ASP.NET Application

To execute an ASP.NET file, the following steps are followed:

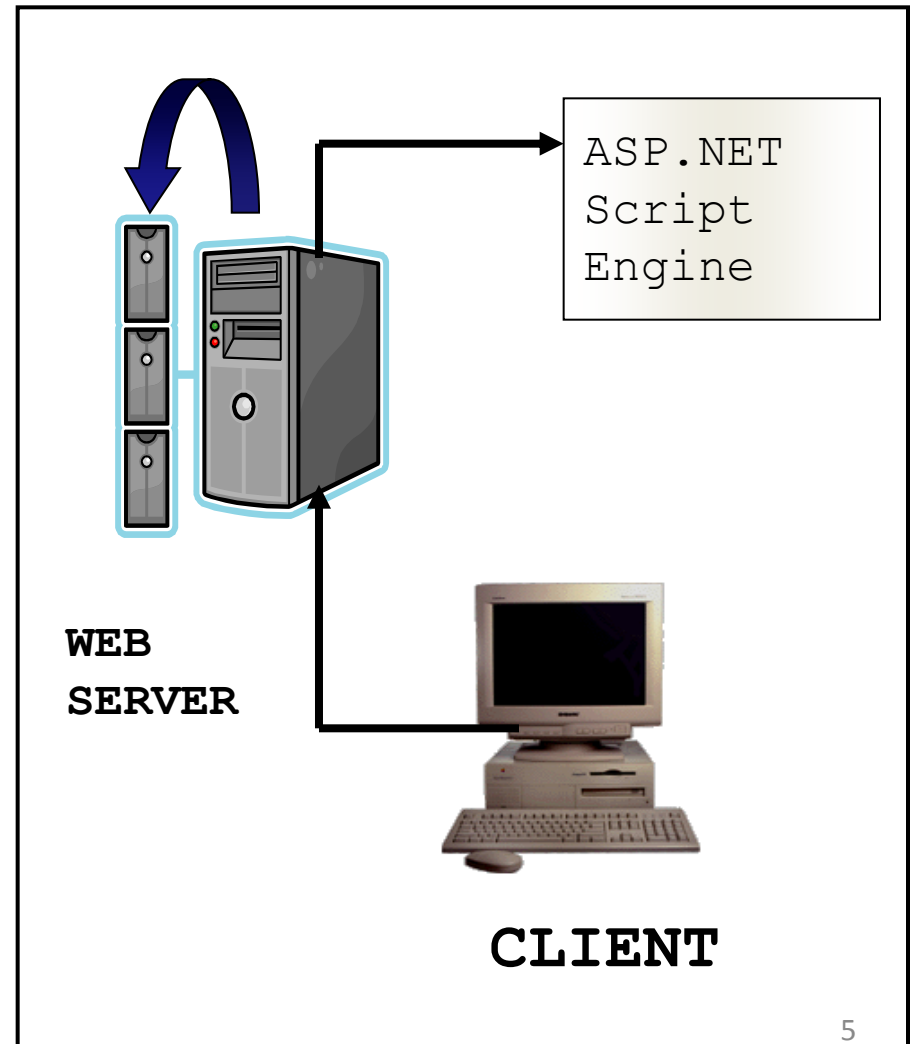
1. A web browser sends a request for an ASP.NET file to the web server by using a URL.
2. The web server receives the request and retrieves the appropriate ASP.NET file from the disk or memory.
3. The web server forwards the file to the ASP.NET script engine for processing.





Working of an ASP.NET Application

4. The ASP.NET script engine reads the file from top to bottom and executes it.
5. The processed ASP.NET file is generated as an HTML document and the ASP.NET script engine sends the HTML page to the Web server.
6. The Web server then sends the HTML code to the client which interprets the output and displays it.



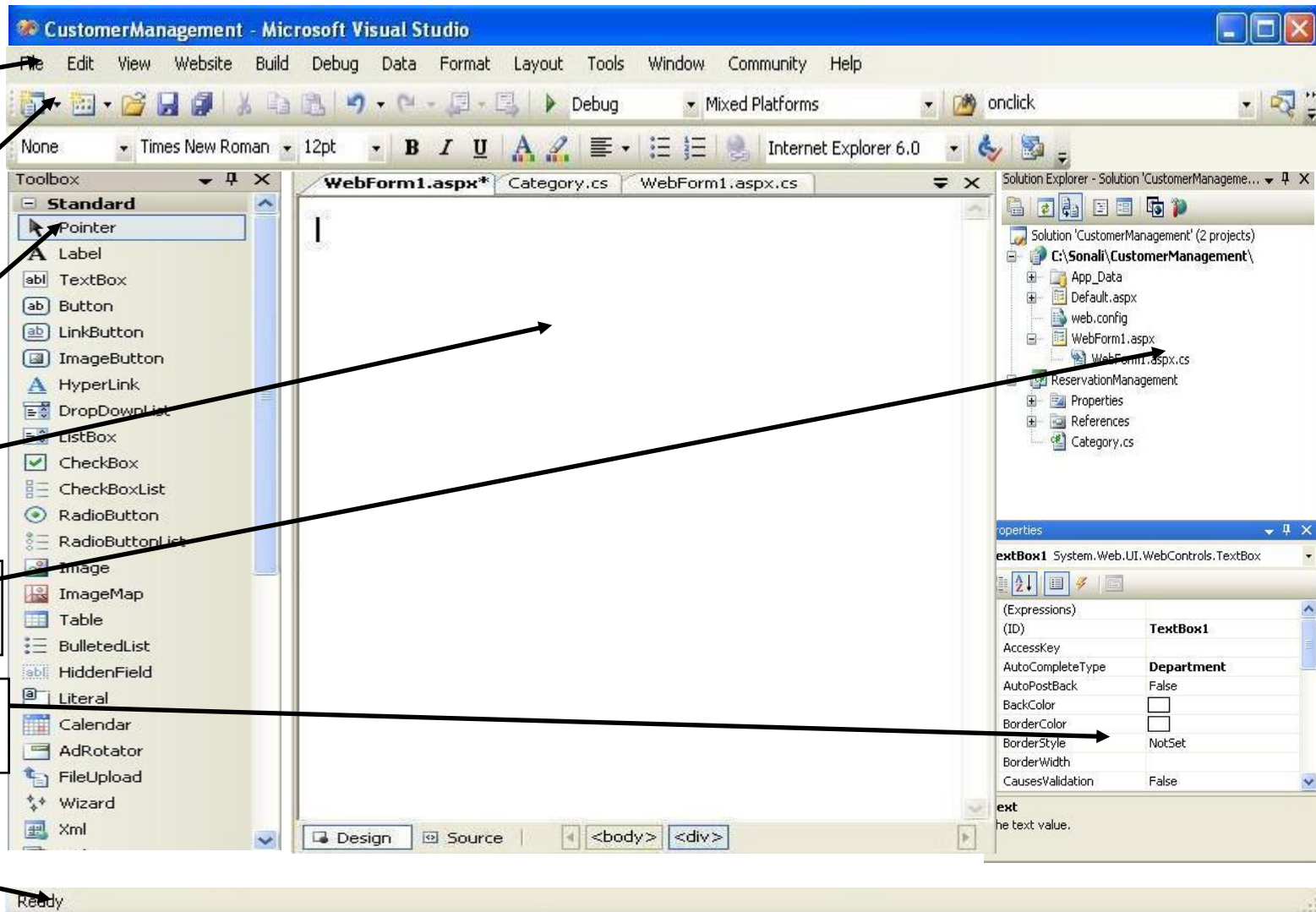


Advantages of ASP.NET

- Easy Programming Model
- Flexible Language Options
- Compiled Execution
- Rich Output Caching
- Web-Farm Session State
- Enhanced Reliability
- Master Pages
- Themes
- Improved Security
- Web Services
- Improved Performance and Scalability



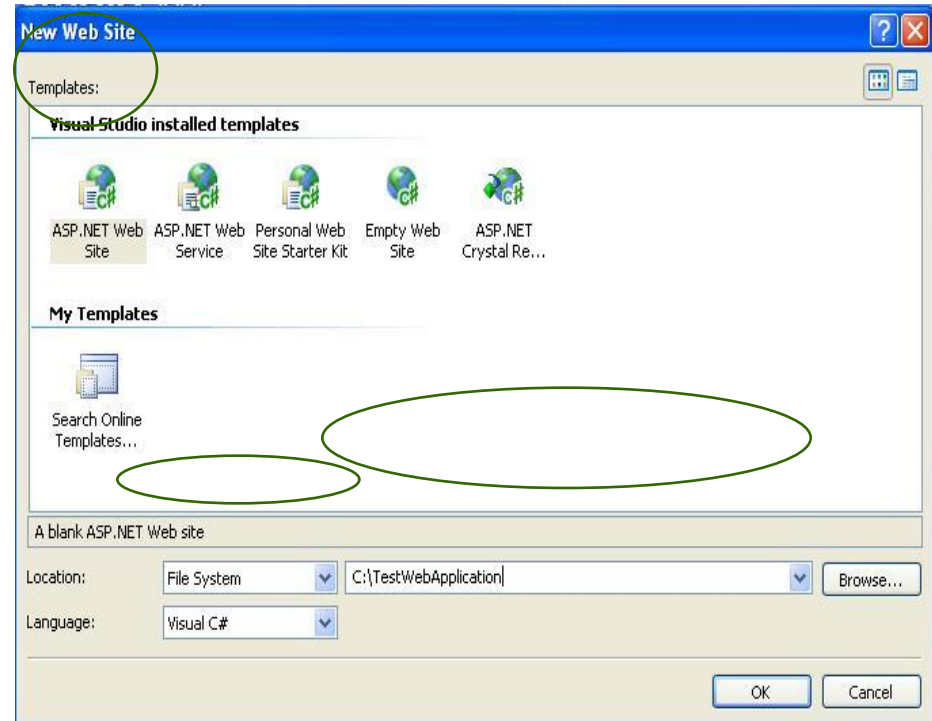
Visual Studio 2010 IDE





Creating a New Web Application

- To start a new Web Application in VS 2008, Click the *Create Web Site* button on the Start page or Select **File >** New > Web Site
- The New Web Site allows you to choose:
 - Templates
 - Language for creating an application
 - Location where the application will be created

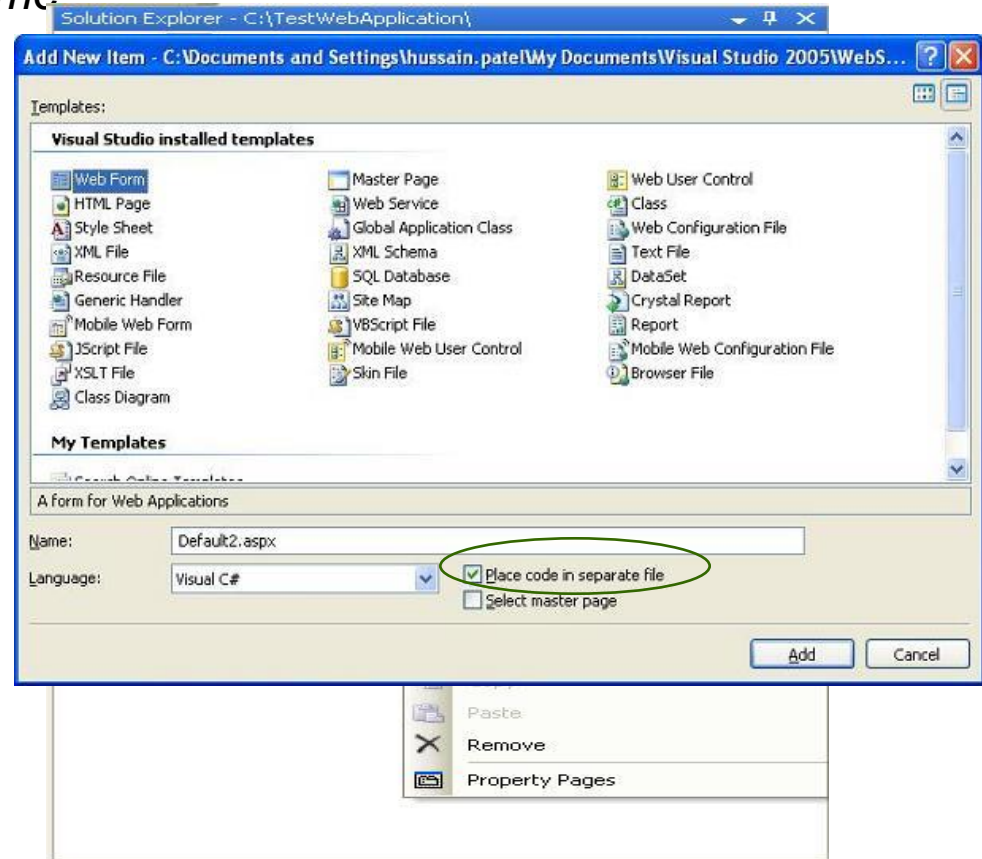




Creating a New Application (Continued)

- After you create a new Web Application, Default.aspx page is added to this Website. To Rename this page, *Select* the page from the Website node in the *Solution Explorer* > *Right Click* > *Rename*

- Files can be added to the Project, using Solution Explorer:
 - Right click on the project node, in the *Solution Explorer*, and select the option *Add New Item*.
 - The *Add New Item* window will popup.
 - Select the type of file (item) to be added and click on Add.



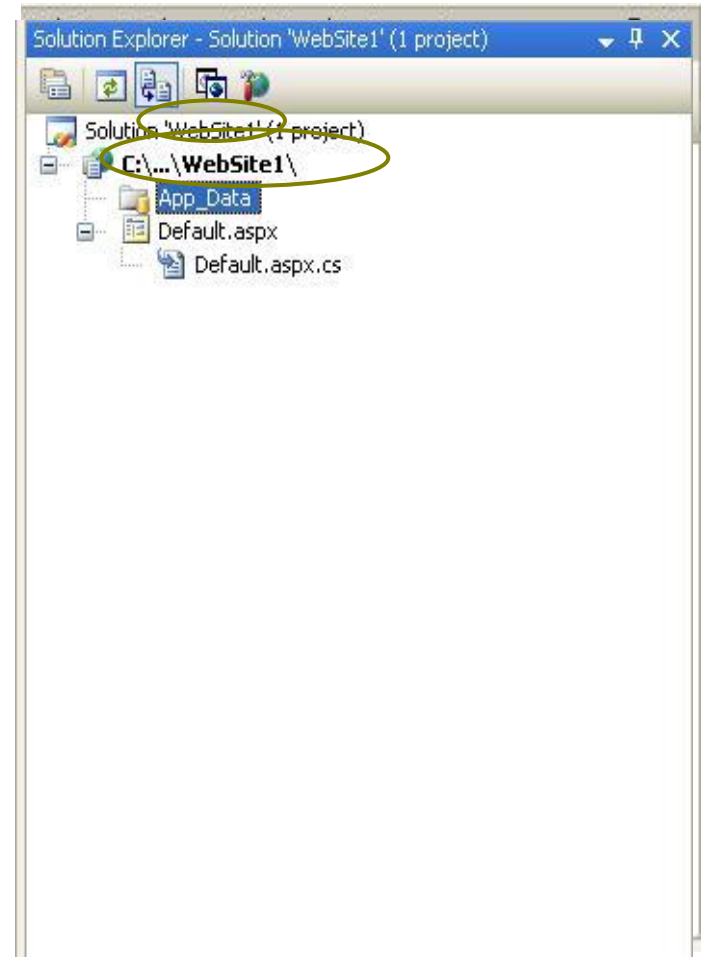


Solution Explorer

- Presents a *tree view structure* of files present in the project.
 - By default a New Website will contain:
 - An App_Data folder
 - A Default.aspx page (including Default.aspx.cs)

To view Solution Explorer:

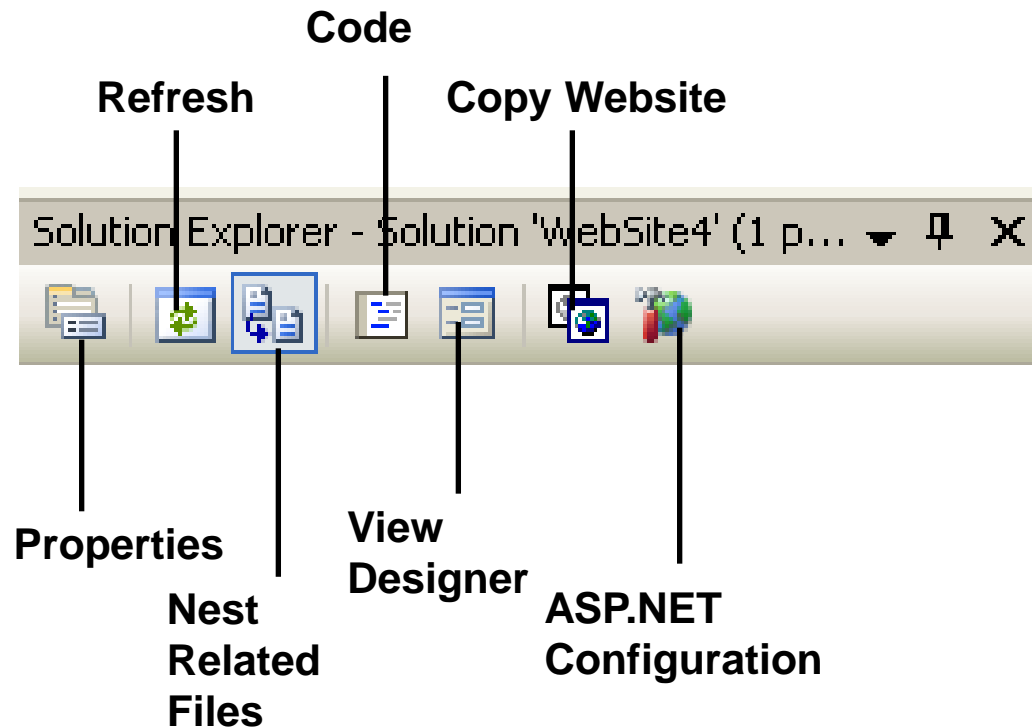
- *Select View > Solution Explorer*
- OR
- *Press buttons Ctrl+W,S*





Solution Explorer (Continued)

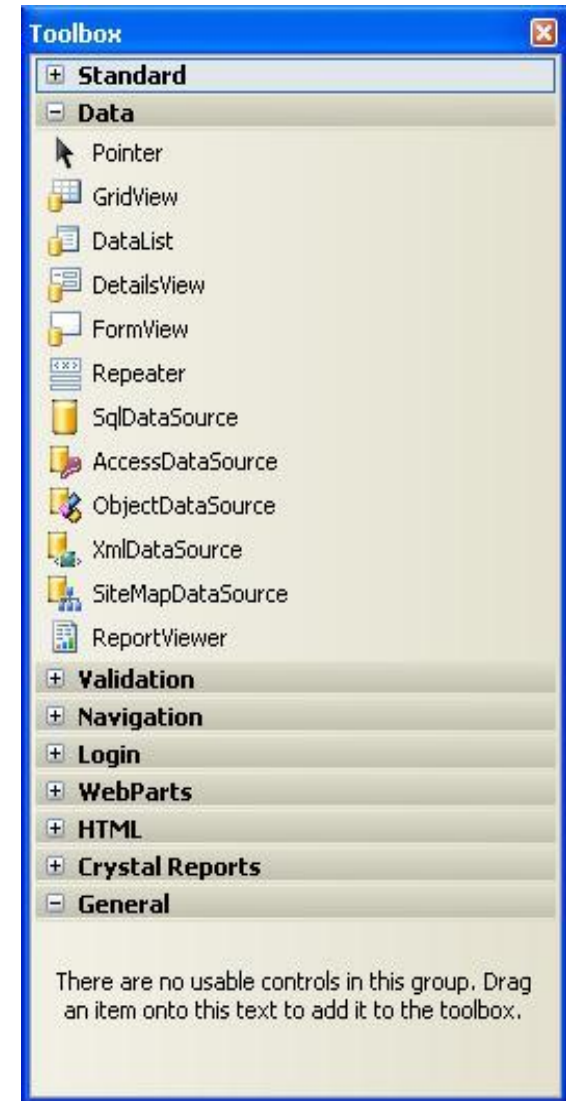
- The Toolbar at the top of Solution Explorer enables various tasks.





Toolbox

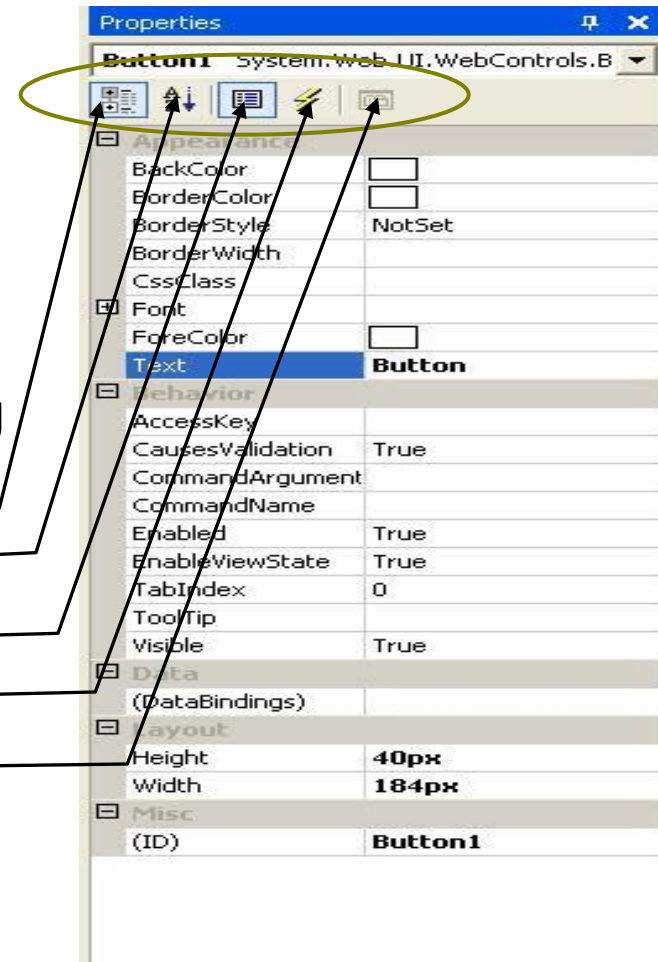
- To add controls in the *Design Window* use *Toolbox*.
- There are various *tool tabs* available in the Toolbox.
 - The controls in the IDE are presented in a hierarchical manner (e.g., Standard Tab, Data Tab, Validation, Navigation, WebParts etc.).
 - Depending on the type of project (application) the *toolbox tabs will vary*.
- To view the tool box:
 - *Select menu View > Toolbox*
 - OR
 - Press buttons *Ctrl+Alt+X* or *Ctrl+W, X*
- You can also view the controls as icons by right-clicking on the toolbox you want to change and deselecting the List View.





Properties Window

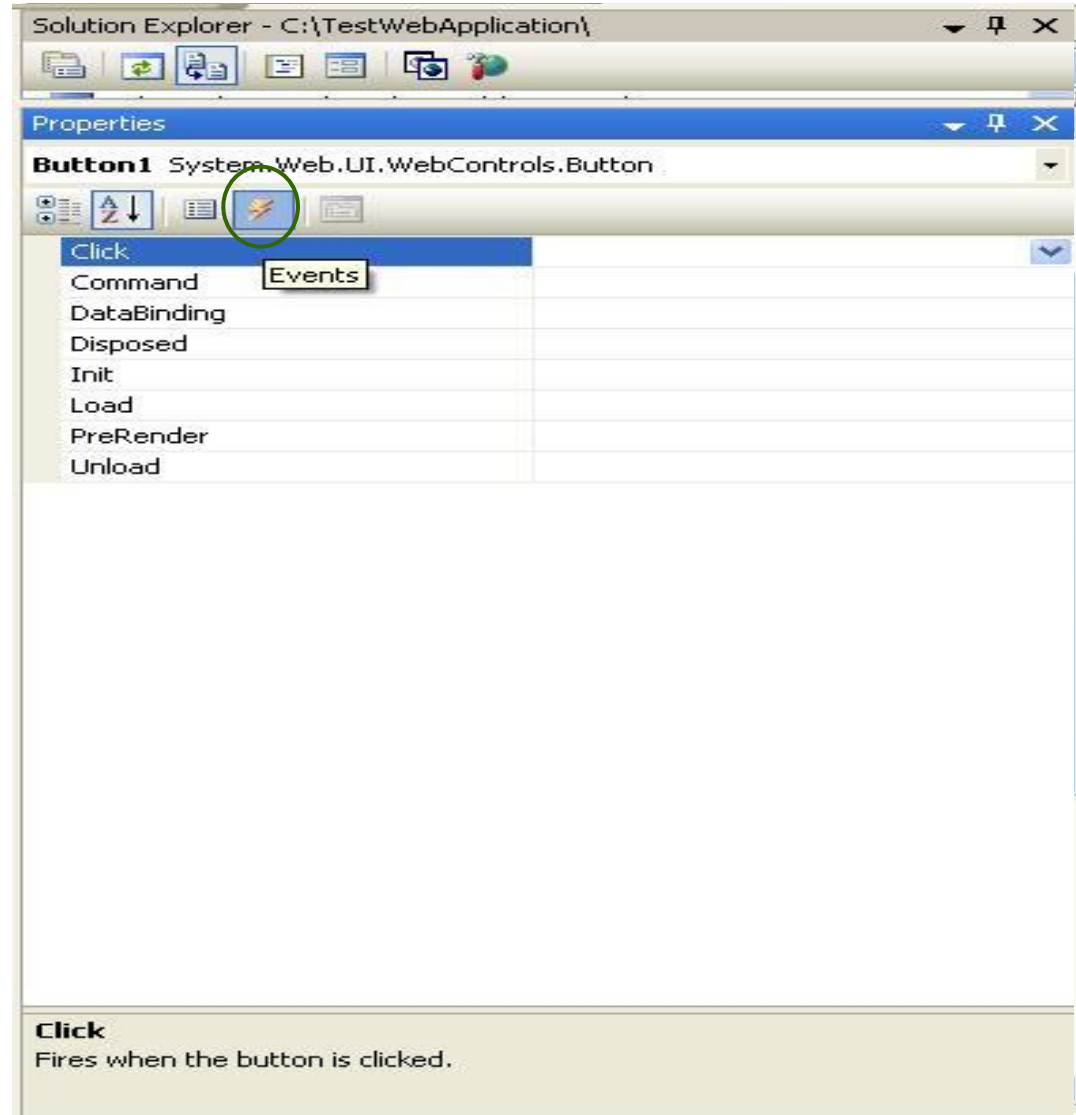
- To *view or change* the *properties* and *events* of a selected control during design use the *Properties Window*
- To configure a control:
 - Click once to select it
 - *Press F4* or Select menu *View > Properties window*
 - Modify the appropriate properties in the window
- There are various options provided for viewing the properties of the selected control, such as:
 - *Categorized view*
 - *Alphabetical view*
 - *Properties view (default)*
 - *Events View*
 - *Property pages*





Adding an Event

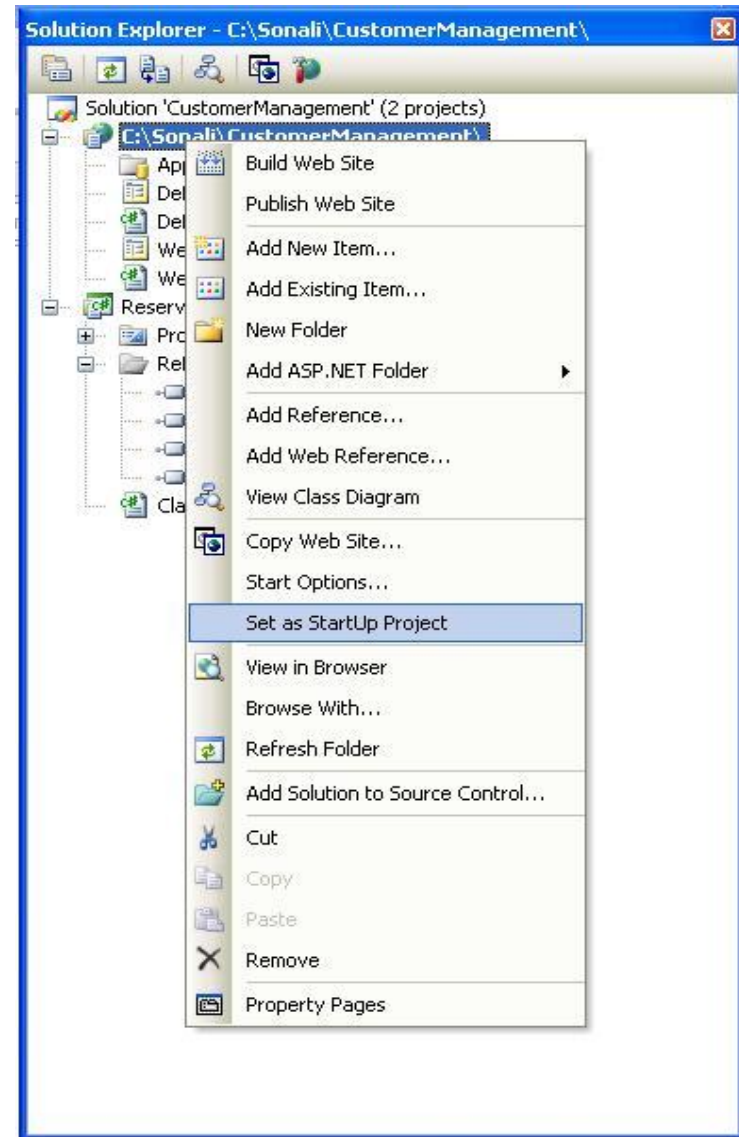
- Events can be added to the code in one of three ways:
 1. *Double clicking* a *control* in design view
 2. *Typing* the code manually
 3. Selecting the **Events Icon** and double clicking the required event from the Properties Window





Project Settings

- *Project Settings* can be adjusted using various options in the *Project Properties* menu or by using the *Solution Explorer* window.
 - These settings change based on the type of application developed.
- Setting *Startup Page*:
 - Right Click on the form you want set as the startup page in the *Solution Explorer*.
 - Select option *Set As Start Page*.
- *Startup Project* (In case of multiple projects):
 - Right Click on *Project* to set as startup project in the *Solution Explorer*.
 - Select Option *Set As StartUp Project*.





Resources

- Visual Studio 2008 Website

<http://msdn.microsoft.com/vstudio/>



PowerPoint Presentation

by

Mr. ALEEM KHAN

[Department of Computer Science]



Thank You...